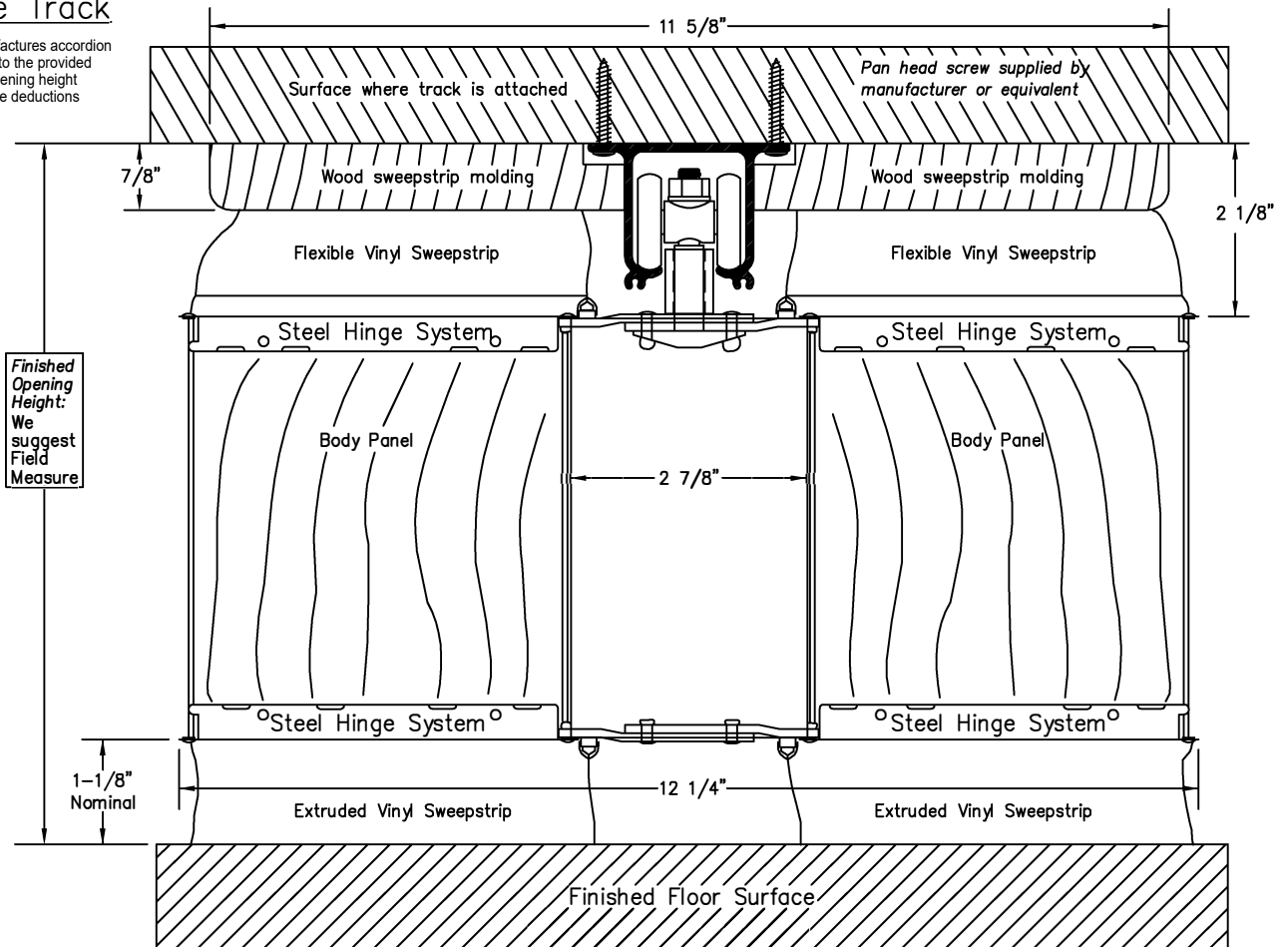
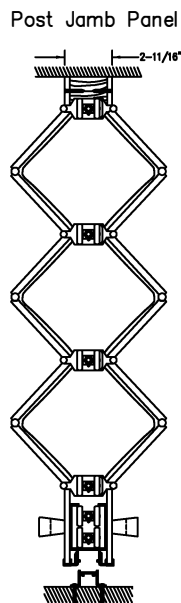
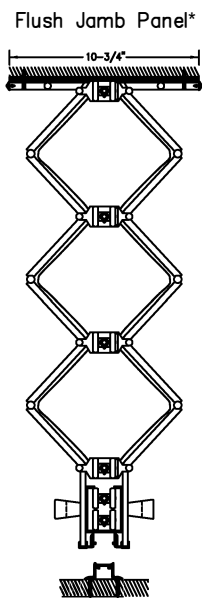


Surface Track

Woodfold manufactures accordion doors to fit into the provided finished opening height do not make deductions

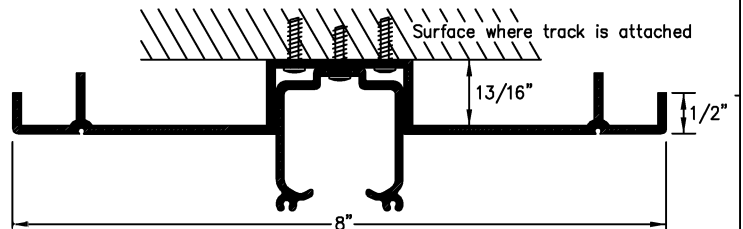


Mounting Panel Options

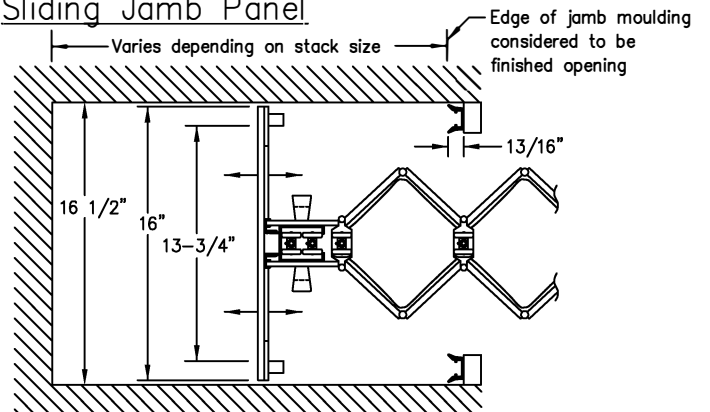


*For direct mounting only not intended for sliding jamb board for pocket

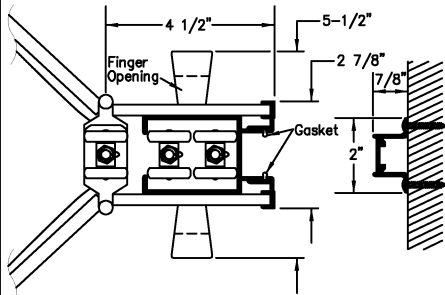
Optional Ceiling Guard Track



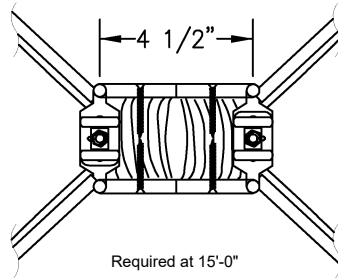
Sliding Jamb Panel



Lead Post, Jamb Moulding & Handle

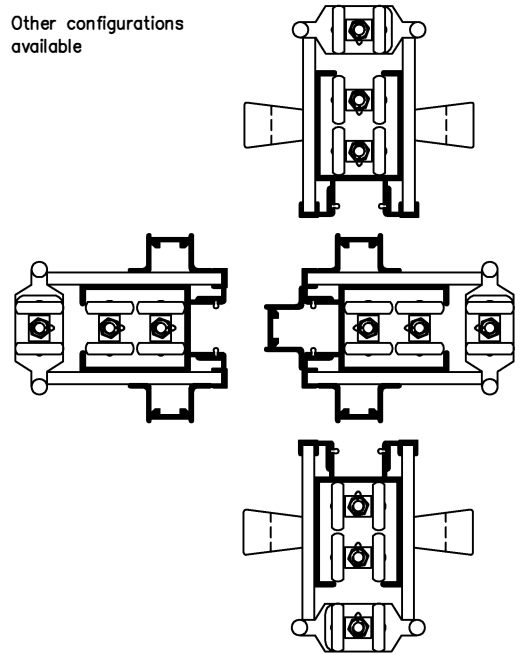


Intermediate Rolling Post



Multiple Meeting Options

Other configurations available



INFORMATION

Width	Custom made to any width Maximum door section is 15' -0"	
Height	Use intermediate posts for wider openings. Vinyl lam custom made to 10' -1"	
Panels	Hardwood veneer custom made to 10' -1" Natural hardwood or vinyl-lam on MDF core Extruded Vinyl:	
Panel Connector	Black, Gray, White, Brown or Sand	
Sweep Strip	1" or 2" Gray, White or Brown	
Hinge System	Steel: Bronze or Silver	
Wheels	1 1/8" Ball bearing nylon wheels on steel axes	
Track	Aluminum (straight only): Clear w/White Moldings	
Ceiling Guard & Track	Aluminum (straight only): Clear	
Lead and Jamb	Aluminum: White, Brown, Silver or Sand Coordinated with panel connector	
Intermediate	Faced to match body panel selection	
Latch	Deadlatch with thumb turn two sides	
Stack Dimension	2" perlineal foot plus 4-1/2" for each lead	
Header	Construction Details by Others	
Door Weight	<u>Height</u>	<u>Average Weight</u>
	8'-1"	28lbs. Per lineal foot
	10'-1"	35lbs. Per lineal foot

Catch/Lock Options

Magnet	Magnet with strike plate
Privacy Latch	Deadlatch with thumb turn one side
Springlatch	Springlatch with thumb turn two sides
Keylock 1 Side	Deadlatch with thumb turn one side, keylock one side
Keylock 2 Side	Deadlatch with keylock two sides
Single Cremone	Single cremone bolt with keylock
Double Cremone	Double cremone bolt with keylock
Footbolts	Drop Bolt or Springpin
Keylock Options	Weiser Cylinder 6-Pin (Standard), Schlage 5-Pin cylinder or BEST Construction core to be keyed on site by others to match existing job

See Woodfold Accordion Door brochure for additional details

Job Name: _____
Job Location: _____
Supplier: _____

Architects Acceptance

Field Sound Transmission Class: The Accordion door (Series 3300) has a field sound transmission class (FSTC) of 33. Field tests were performed by TOWNE, RICHARDS and CHAUDIER INC., Seattle, Washington following the procedures specified in ASTM designation (Feb. 1994).

Qty.	Single/Pair	Single End/Double End	Left or Right Stack	Width X Height	Material Finish/Color	Options

THESE SPECIFICATIONS ARE SUBJECT TO CHANGE WITHOUT NOTICE